

LEGEND

Conservation Easement Lands Open Space/Existing Zoning

	State Fee Simple Owned Conserved Lands (with 65 Year Lease Back)	55.3 Acres
	State Conserved Lands	561.5 Acres
Total State Conserved Lands		616.8 Acres

City "Conserved" Lands Areas

	City Owned - Conservation Lands	5.1 Acres
	Future City Owned - Park Lands	42.8 Acres
Total City "Conserved" Lands		47.9 Acres

Total Conserved Lands 664.6 Acres

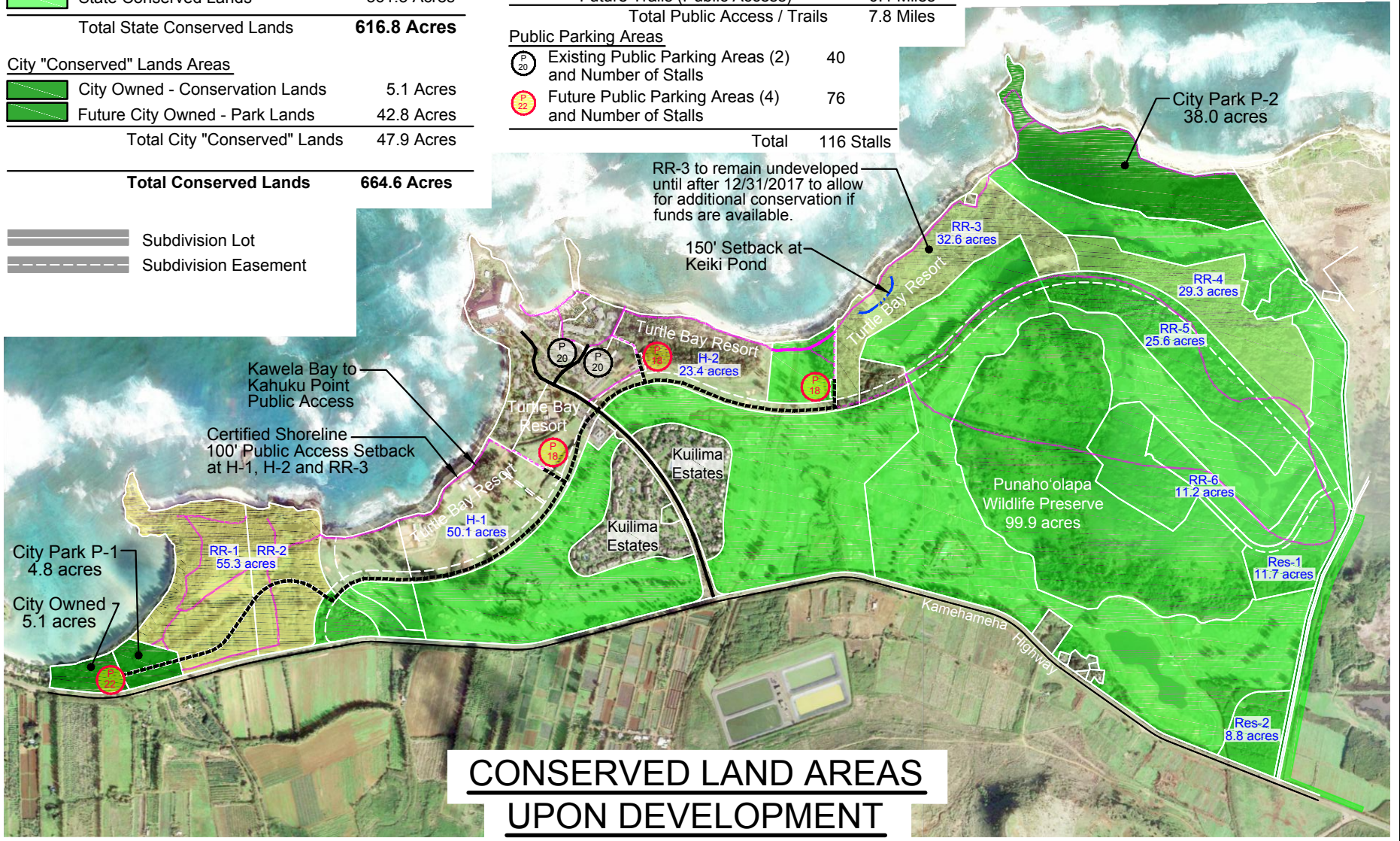
	Subdivision Lot
	Subdivision Easement

Public Access Trails

	Existing Public Access	0.7 Miles
	Future Public Access	1.8 Miles
	Permanent Trails (Public Access)	4.9 Miles
	Future Trails (Public Access)	0.4 Miles
Total Public Access / Trails		7.8 Miles

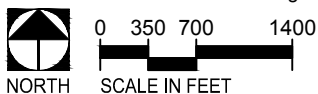
Public Parking Areas

	Existing Public Parking Areas (2) and Number of Stalls	40
	Future Public Parking Areas (4) and Number of Stalls	76
Total		116 Stalls



**CONSERVED LAND AREAS
UPON DEVELOPMENT**

Source:
Aerial Photo from Google Earth dated 01/29/2013



Turtle Bay Resort
April 2015