

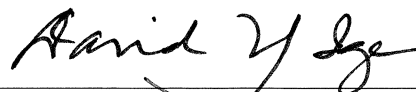


WHEREAS, the Board of Land and Natural Resources at its meetings of June 9, 2017 and January 8, 2021, approved the withdrawal of a portion of land from Governor's Proclamation dated December 24, 1926.

NOW, THEREFORE, I, DAVID Y. IGE, Governor of the State of Hawaii, by virtue of the authority vested in me under Section 183-11, Hawaii Revised Statutes, as amended, do hereby order that the following described land and improvements, identified as "Withdrawal Portion of Lihue-Koloa Forest Reserve, Governor's Proclamation dated December 24, 1926," situate at Wahiawa, Koloa, Kauai, Hawaii, containing an area of 2.752 acres, more particularly described in Exhibit "A" and delineated on Exhibit "B," both of which are attached hereto and made parts hereof, said exhibits being respectively, a survey description and survey map prepared by the Survey Division, Department of Accounting and General Services, State of Hawaii, being designated as C.S.F. No. 25,819 and dated October 16, 2020, is hereby withdrawn from the Operation of Governor's Proclamation dated December 24, 1926.

SUBJECT to disapproval by the Legislature by two-thirds vote of either the Senate or the House of Representatives or by majority vote of both, in any regular or special session next following the date of this Executive Order.

IN WITNESS WHEREOF, I have hereunto set my hand and caused the Great Seal of the State of Hawaii to be affixed. Done at the Capitol at Honolulu this 6<sup>th</sup> day of September, 2022.



DAVID Y. IGE  
Governor of the State of Hawaii

APPROVED AS TO FORM:



MELISSA D. GOLDMAN  
Deputy Attorney General

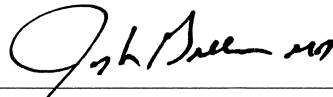
Dated: 8/11/2022

STATE OF HAWAII

Office of the Lieutenant Governor

THIS IS TO CERTIFY That the within is a true copy of Executive Order No. 4679 withdrawing land and improvements from the operation of Governor's Proclamation dated December 24, 1926, the original of which is on file in this office.

IN TESTIMONY WHEREOF, the Lieutenant Governor of the State of Hawaii, has hereunto subscribed his name and caused the Great Seal of the State to be affixed.



JOSH GREEN

Lieutenant Governor of the State of Hawaii

DONE in Honolulu, this 7<sup>th</sup> day of September, A.D. 2022



STATE OF HAWAII  
SURVEY DIVISION  
DEPARTMENT OF ACCOUNTING AND GENERAL SERVICES  
HONOLULU

C.S.F. No. 25,819

October 16, 2020

WITHDRAWAL  
PORTION OF LIHUE-KOLOA FOREST RESERVE  
Governor's Proclamation dated December 24, 1926

Wahiawa, Koloa, Kauai, Hawaii

Being a portion of Royal Patent 7813, Land Commission Award 7714-B, Apana 6 to Moses Kekuaiwa conveyed the Territory of Hawaii by Ernest H. Wodehouse by deed dated October 20, 1909 and recorded in Liber 319, Page 293 (Land Office Deed 3331).

Beginning at the southeast corner of this parcel of land, on the southeast boundary of Lihue-Koloa Forest Reserve, Governor's Proclamation dated December 24, 1926 and on the west boundary of Park Site, Governor's Executive Order 2375, the coordinates of said point of beginning referred to Government Survey Triangulation Station "PAPAPAHALOHALO" being 1502.00 feet North and 803.26 feet West, thence running by azimuths measured clockwise from True South:-

1. 101° 02' 61.06 feet along the remainder of Lihue-Koloa Forest Reserve, Governor's Proclamation dated December 24, 1926;
2. 94° 04' 91.93 feet along the remainder of Lihue-Koloa Forest Reserve, Governor's Proclamation dated December 24, 1926;

3. 107° 08' 101.84 feet along the remainder of Lihue-Koloa Forest Reserve, Governor's Proclamation dated December 24, 1926;
4. 195° 32' 23.92 feet along the remainder of Lihue-Koloa Forest Reserve, Governor's Proclamation dated December 24, 1926;
5. 253° 27' 17.90 feet along the remainder of Lihue-Koloa Forest Reserve, Governor's Proclamation dated December 24, 1926;
6. 204° 50' 179.56 feet along the remainder of Lihue-Koloa Forest Reserve, Governor's Proclamation dated December 24, 1926;
7. 190° 20' 331.90 feet along the remainder of Lihue-Koloa Forest Reserve, Governor's Proclamation dated December 24, 1926;
8. 166° 57' 240.52 feet along the remainder of Lihue-Koloa Forest Reserve, Governor's Proclamation dated December 24, 1926;
9. 80° 43' 106.20 feet along the remainder of Lihue-Koloa Forest Reserve, Governor's Proclamation dated December 24, 1926;
10. 118° 50' 30" 205.80 feet along the remainder of Lihue-Koloa Forest Reserve, Governor's Proclamation dated December 24, 1926;
11. 176° 26' 128.15 feet along the remainder of Lihue-Koloa Forest Reserve, Governor's Proclamation dated December 24, 1926;
12. 209° 30' 62.26 feet along the remainder of Lihue-Koloa Forest Reserve, Governor's Proclamation dated December 24, 1926;
13. 279° 57' 217.30 feet along the remainder of Lihue-Koloa Forest Reserve, Governor's Proclamation dated December 24, 1926;

14. 307° 49' 49.16 feet along the remainder of Lihue-Koloa Forest Reserve, Governor's Proclamation dated December 24, 1926;
15. 343° 20' 190.84 feet along the remainder of Lihue-Koloa Forest Reserve, Governor's Proclamation dated December 24, 1926;
16. 347° 09' 252.00 feet along the remainder of Lihue-Koloa Forest Reserve, Governor's Proclamation dated December 24, 1926;
17. 11° 13' 351.01 feet along the remainder of Lihue-Koloa Forest Reserve, Governor's Proclamation dated December 24, 1926;
18. 16° 29' 125.34 feet along the remainder of Lihue-Koloa Forest Reserve, Governor's Proclamation dated December 24, 1926;
19. 276° 27' 163.87 feet along the remainder of Lihue-Koloa Forest Reserve, Governor's Proclamation dated December 24, 1926;

20. 10° 18'

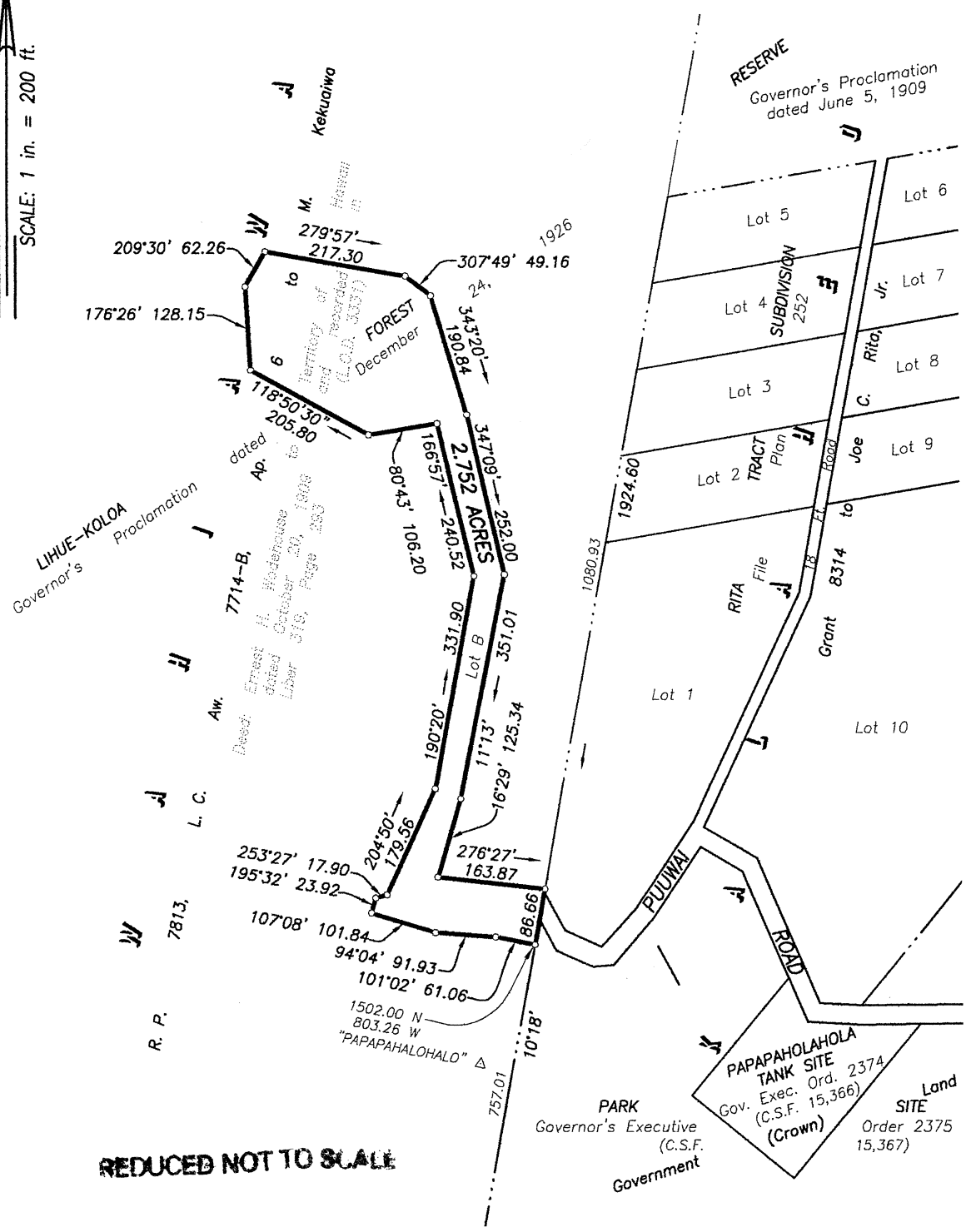
86.66 feet along the west end of Puuwai Road and northwest boundary of Park Site, Governor's Executive Order 2375 to the point of beginning and containing an AREA OF 2.752 ACRES.

SURVEY DIVISION  
DEPARTMENT OF ACCOUNTING AND GENERAL SERVICES  
STATE OF HAWAII

By: *Gerald Z. Yonashiro*  
Gerald Z. Yonashiro  
Land Surveyor rm

Compiled from map and desc. furn.  
by Controlpoint Surveying, Inc.  
Said map and description have been  
examined and checked as to form and  
mathematical correctness but not on  
the ground by the Survey Division.

TRUE NORTH  
SCALE: 1 in. = 200 ft.



REDUCED NOT TO SCALE

**WITHDRAWAL**  
**PORTION OF LIHUE-KOLOA FOREST RESERVE**  
 Governor's Proclamation dated December 24, 1926  
 Wahiawa, Koloa, Kauai, Hawaii

Job K-273(19)  
C. BK.

Scale: 1 inch = 200 feet

**EXHIBIT "B"**

TMK: 2-4-09: Por. 03  
C.S.F. NO. 25,819

SURVEY DIVISION  
DEPARTMENT OF ACCOUNTING AND GENERAL SERVICES  
**STATE OF HAWAII**

RDM October 16, 2020